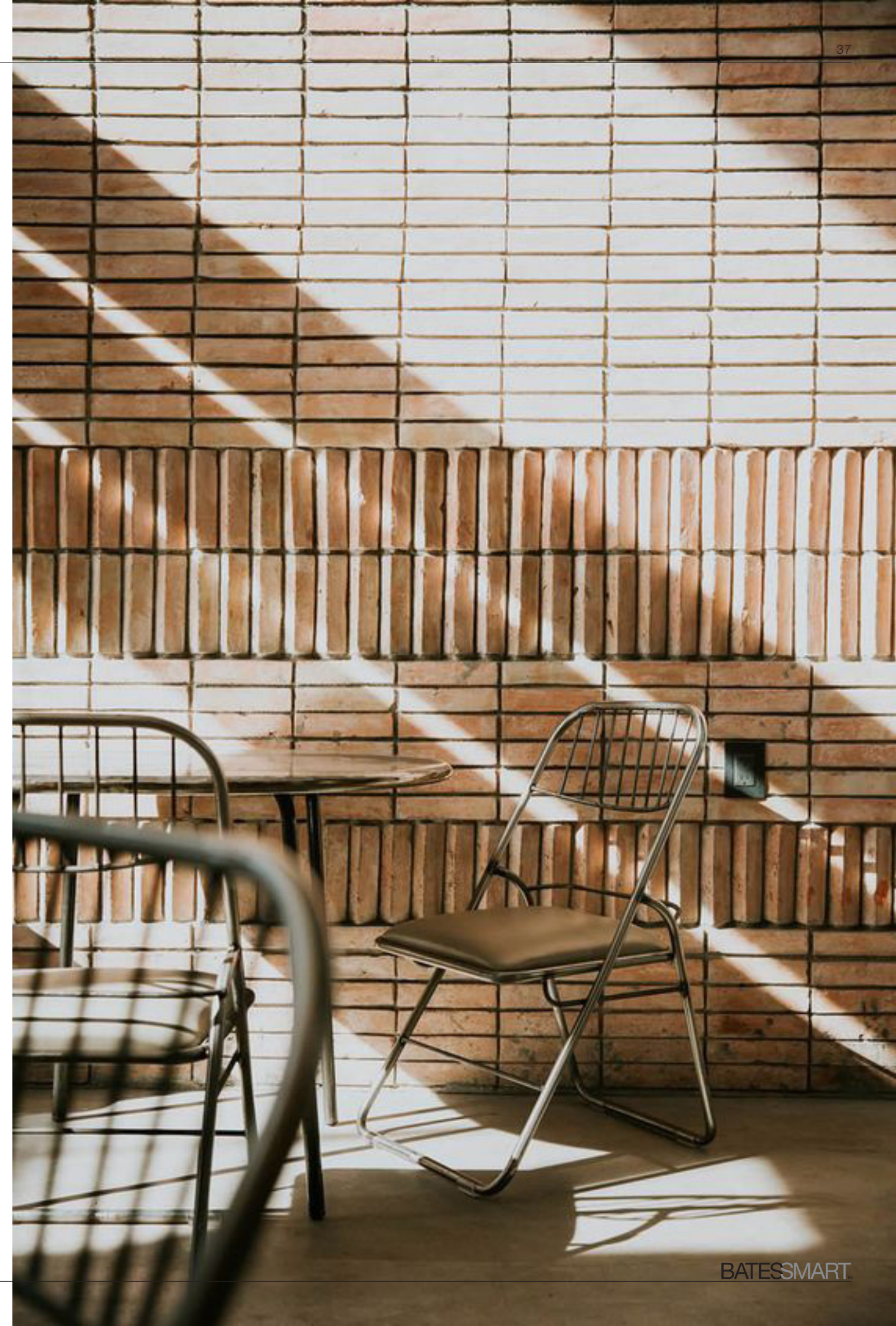
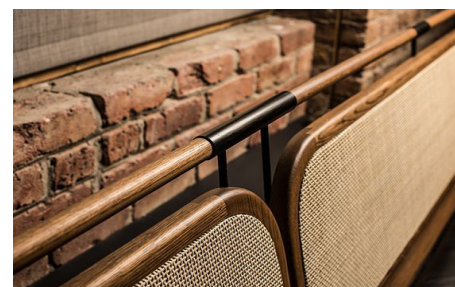


# A CONTEMPORARY INTERPRETATION

*The brick reflecting the colour tones and bricks used in  
the local heritage fabric*





# HERITAGE INTERPRETATION



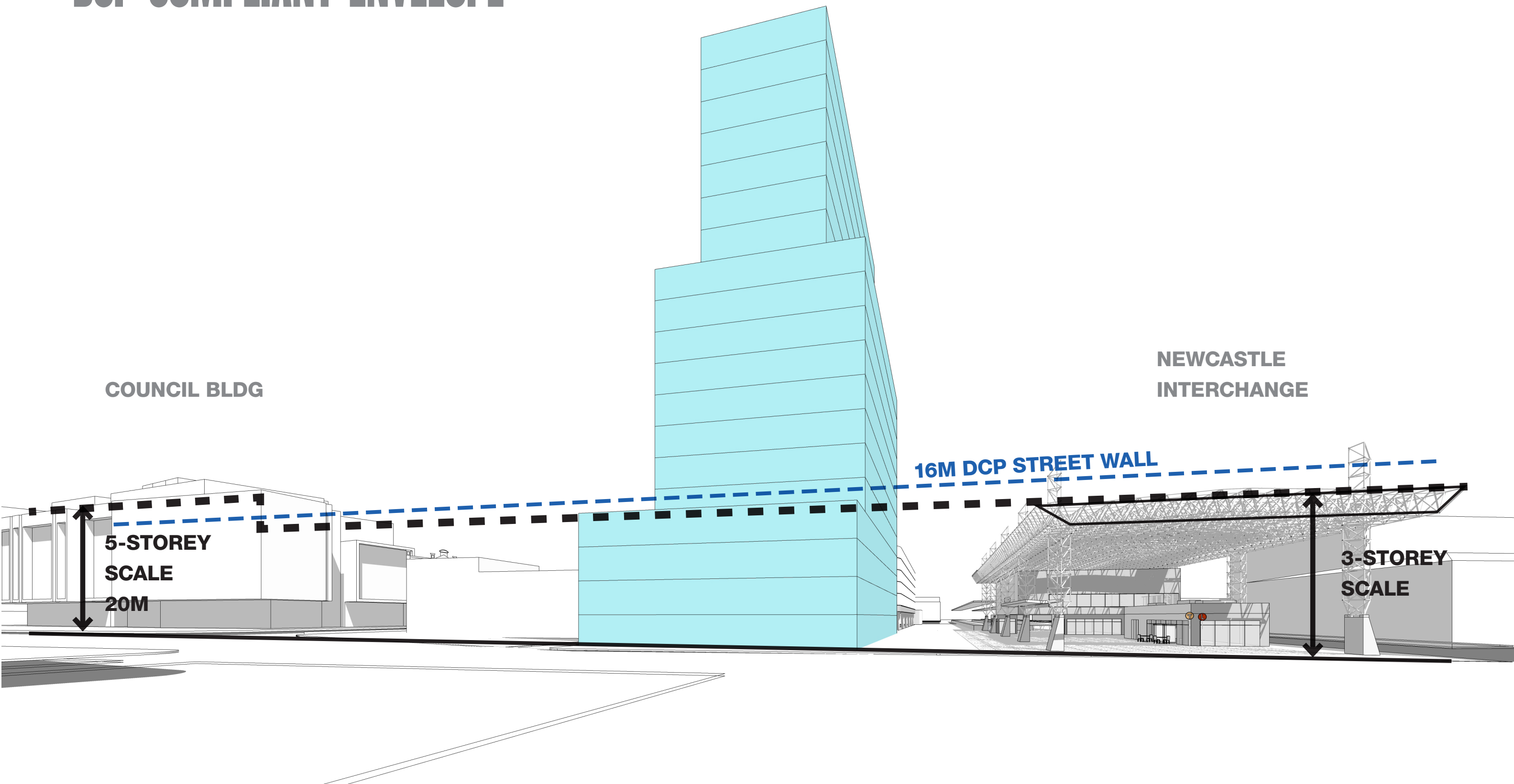


**ITEM 3.**  
**STEWART AVENUE**  
**COLONADE SCLAE**



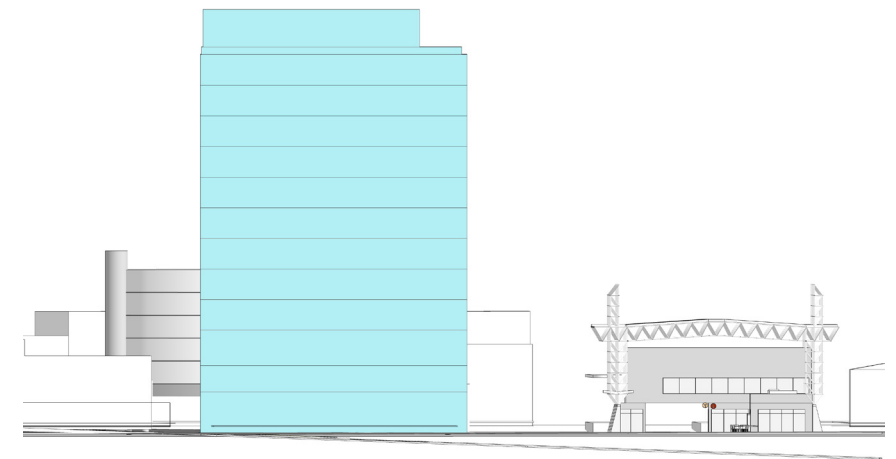
# COLONADE SCALE

## DCP COMPLIANT ENVELOPE





# COLONADE SCALE EXISTING CONDITIONS



COUNCIL BLDG

NEWCASTLE  
INTERCHANGE

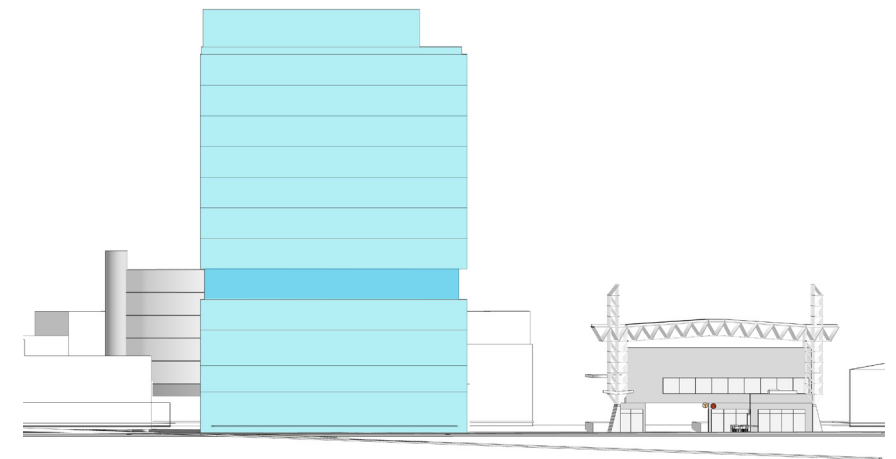
16M DCP STREET WALL

5-STOREY  
SCALE  
20M

3-STOREY  
SCALE



# COLONADE SCALE RESPONSE TO DCP STREETWALL



COUNCIL BLDG

NEWCASTLE  
INTERCHANGE

16M DCP STREET WALL

5-STOREY  
SCALE  
20M

3-STOREY  
SCALE



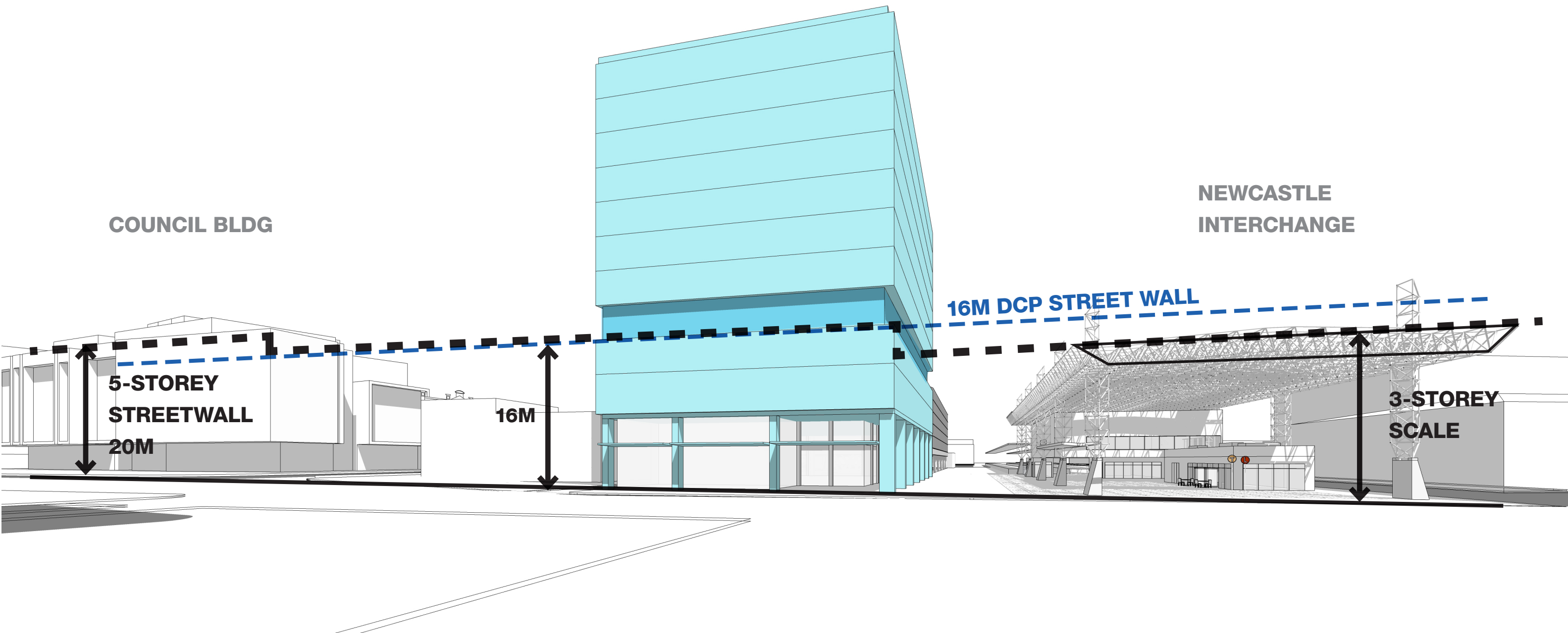
# COLONADE SCALE

## DA PROPOSAL- STREETWALL



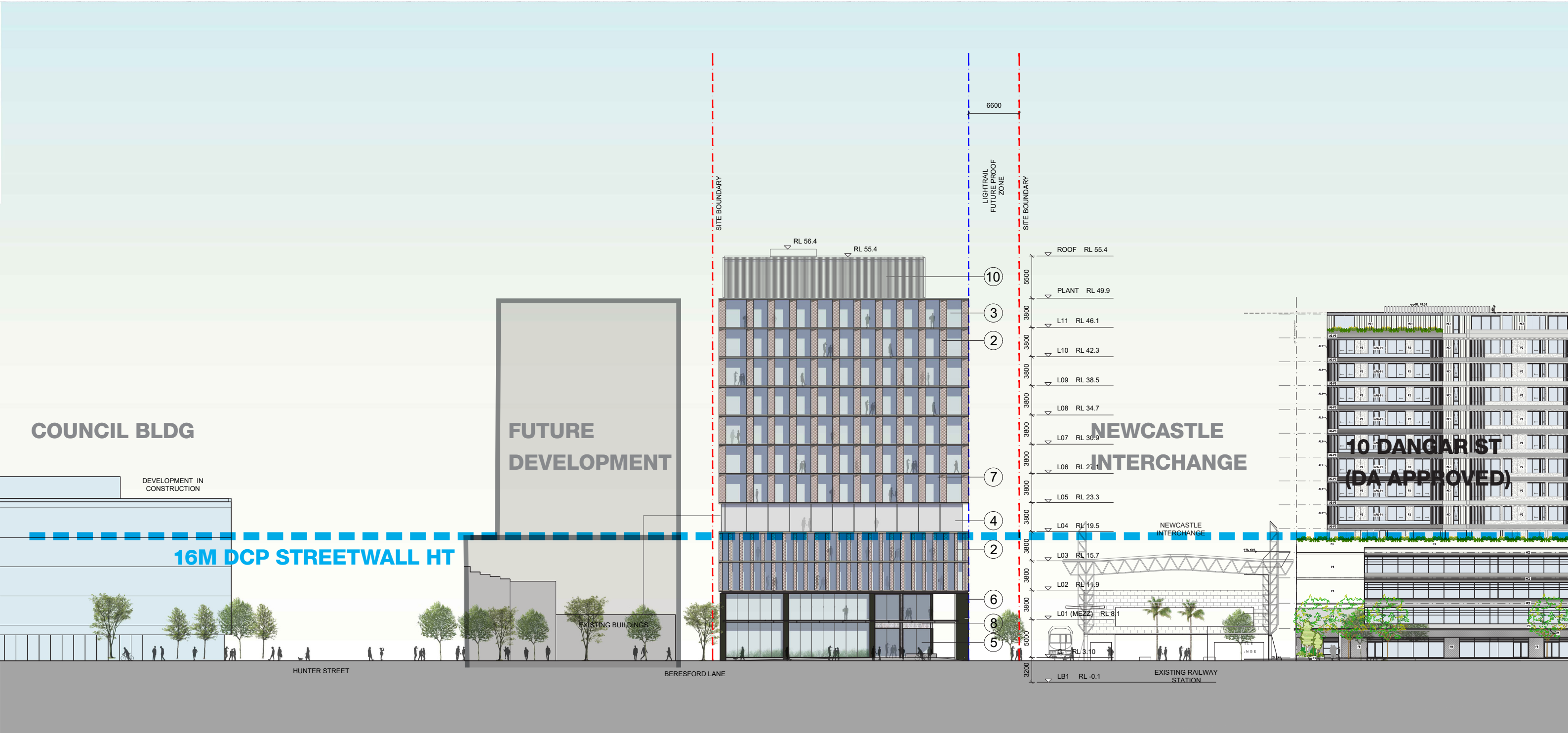
COUNCIL BLDG

NEWCASTLE  
INTERCHANGE



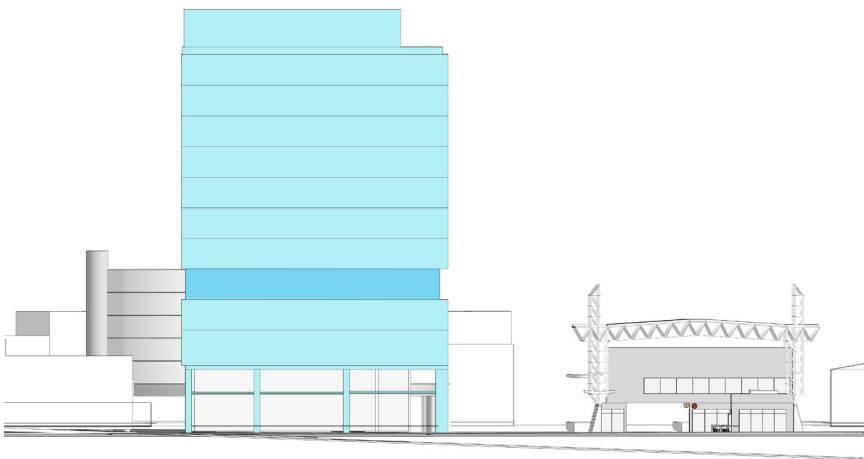


# DA PROPOSAL



# COLONADE SCALE

## DA PROPOSAL - GROUND LEVEL



COUNCIL BLDG

NEWCASTLE  
INTERCHANGE

16M DCP STREET WALL

1-STOREY 4M

2-STOREY  
SCALE

3-STOREY  
SCALE



# COLONADE SCALE

## 3-STOREY ALIGNMENT WITH STATION



# COLONADE SCALE



CHANGE IN PROPORTION

NEWCASTLE  
INTERCHANGE

16M DCP STREET WALL

COUNCIL BLDG

5-STOREY  
SCALE  
20M

3-STOREY  
SCALE



DA PROPOSAL



BATESSMART™



# **ITEM 3.**

# **BERESFORD LANE SETBACK**